



Collaboration in collections

: A Map for the future?
Steve O'Connor
Fiesole Retreat

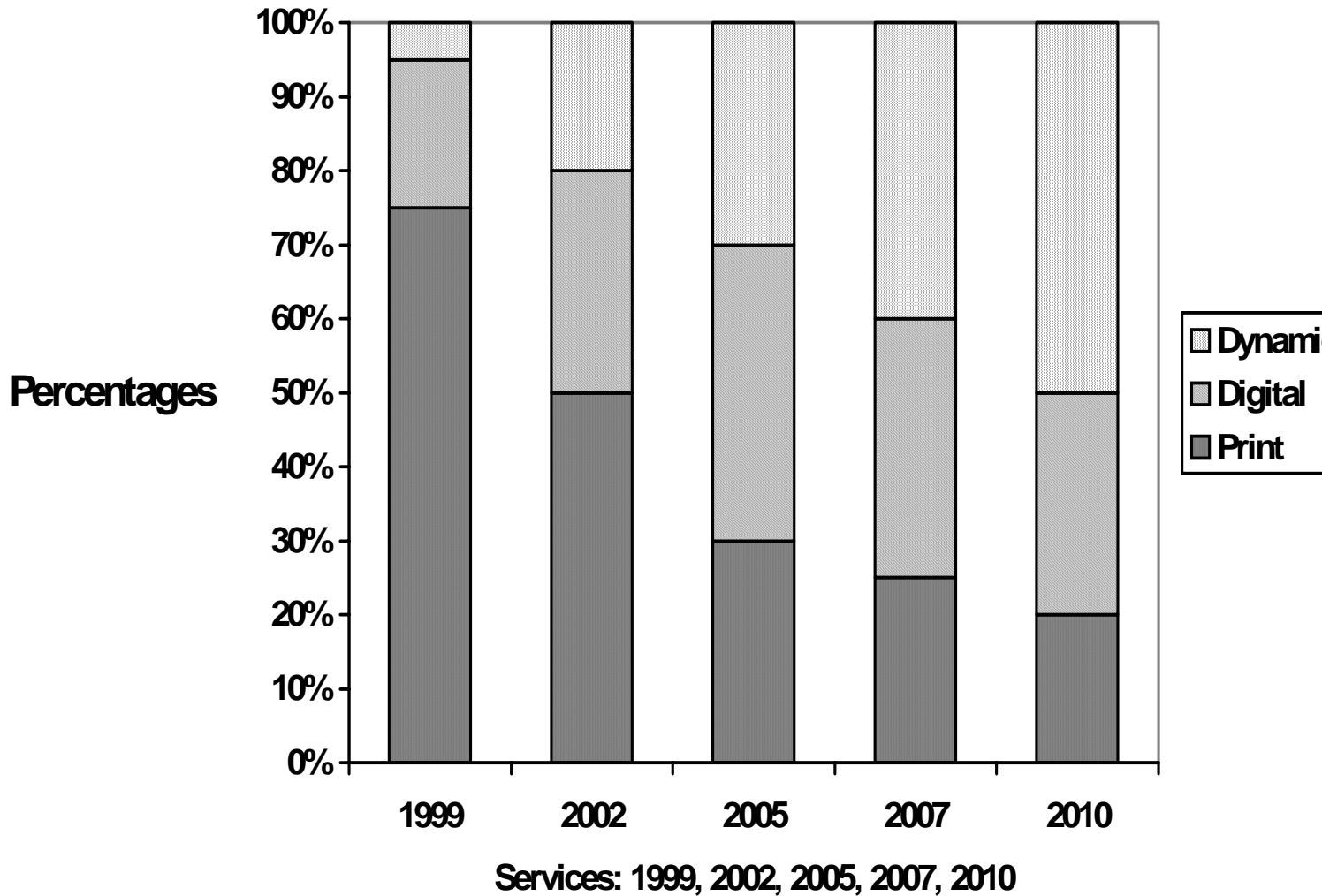
Shift from Cooperation to Collaboration

- Strong inter-lending tradition
- 'Big' shared with 'Smaller'
- Random collecting achieved better coverage
- No reliance on central agency



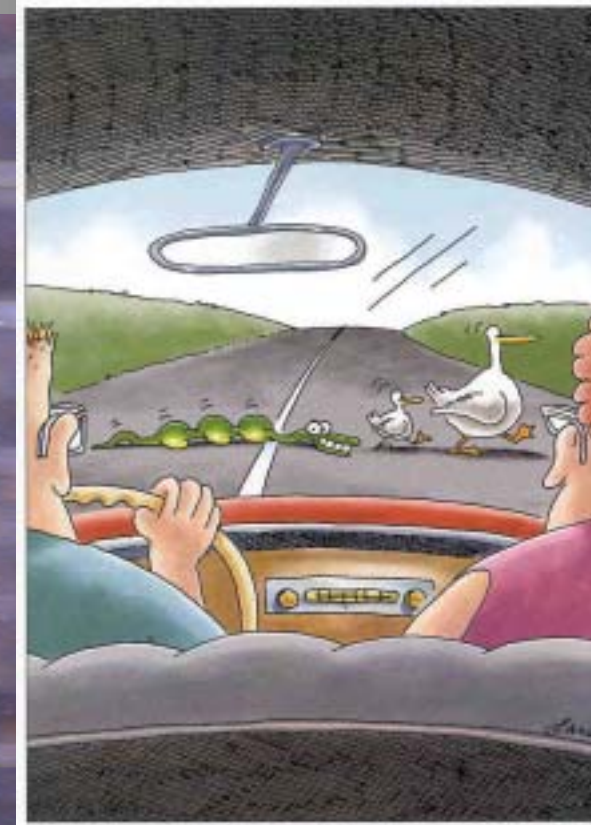


Service Mix



Print/Digital/Dynamic

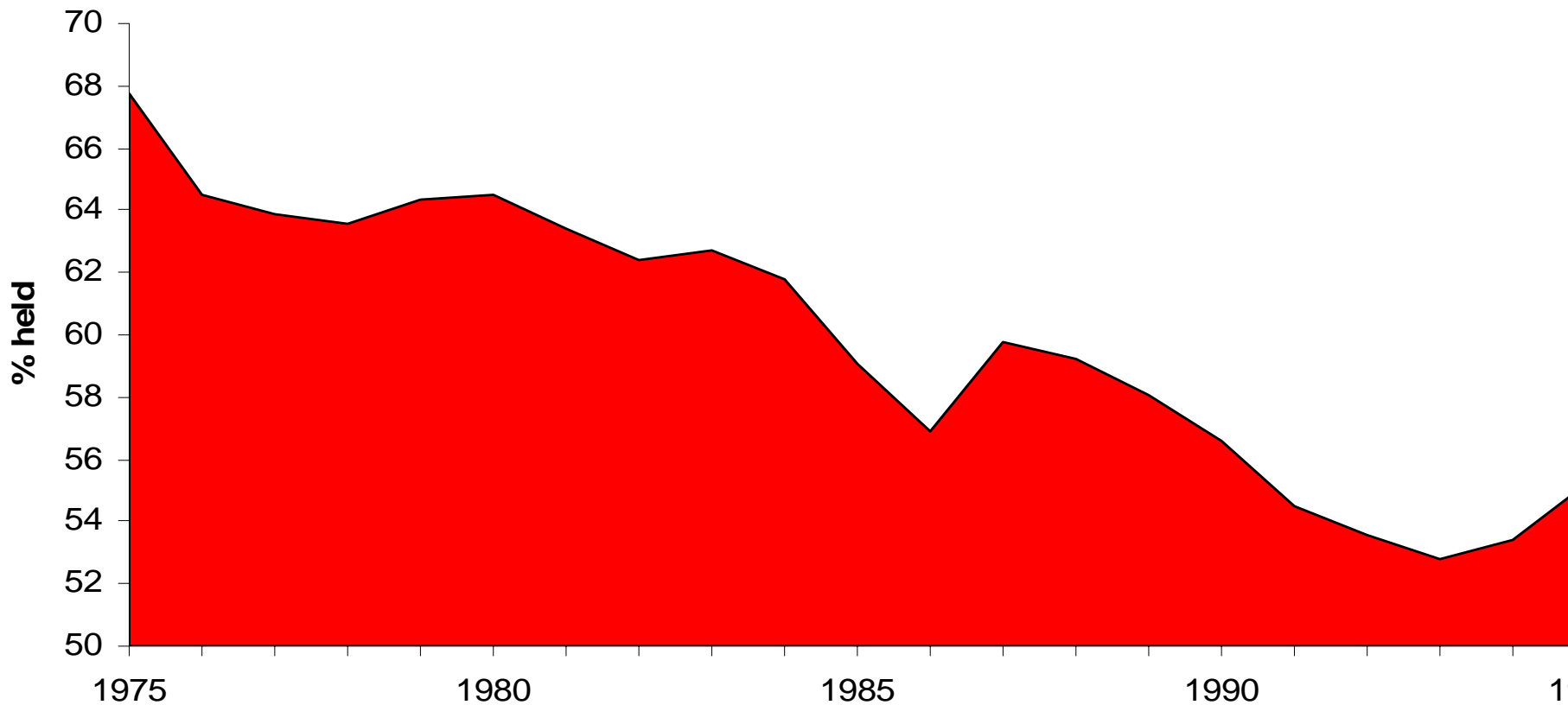
- Rate of change ?
- Publishing patterns / Formats ?
- Library/ User capacity to pay ?



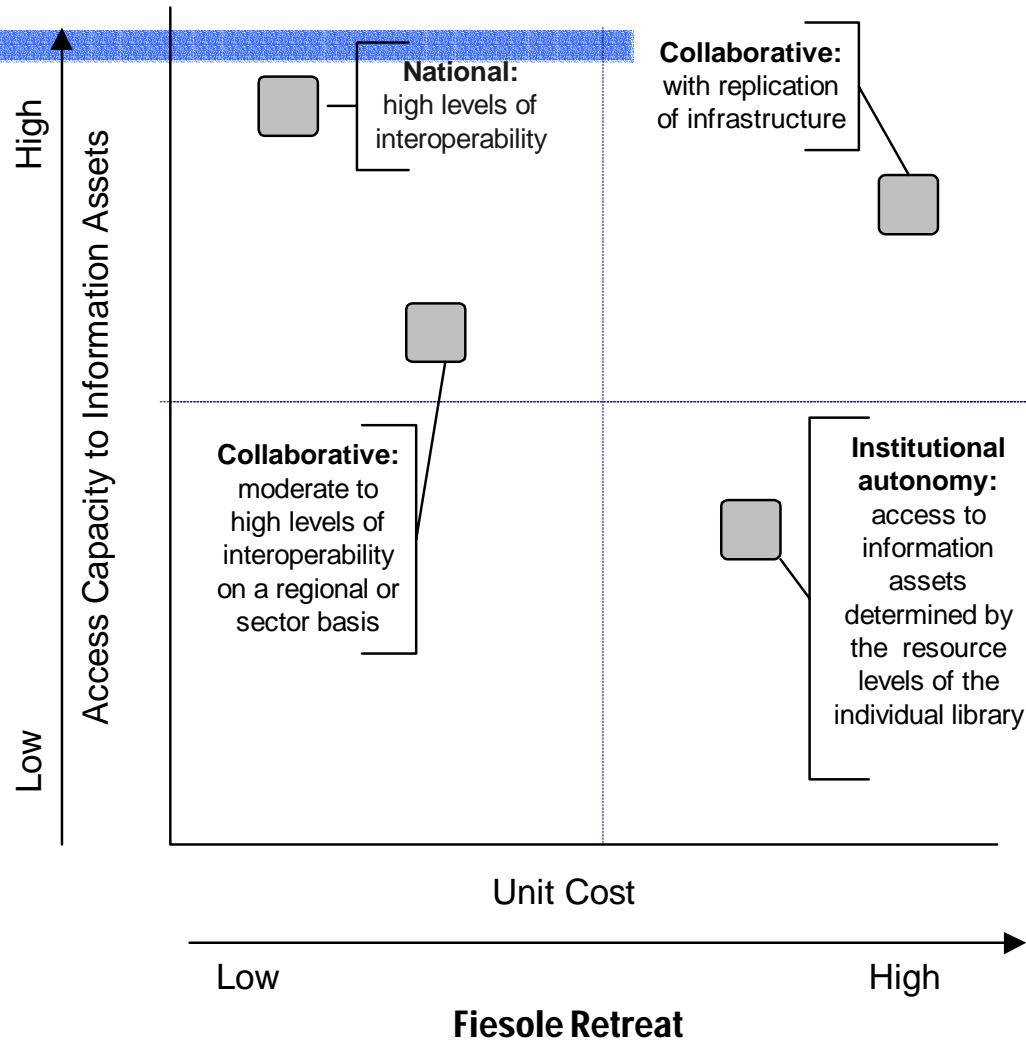


Published Output Held

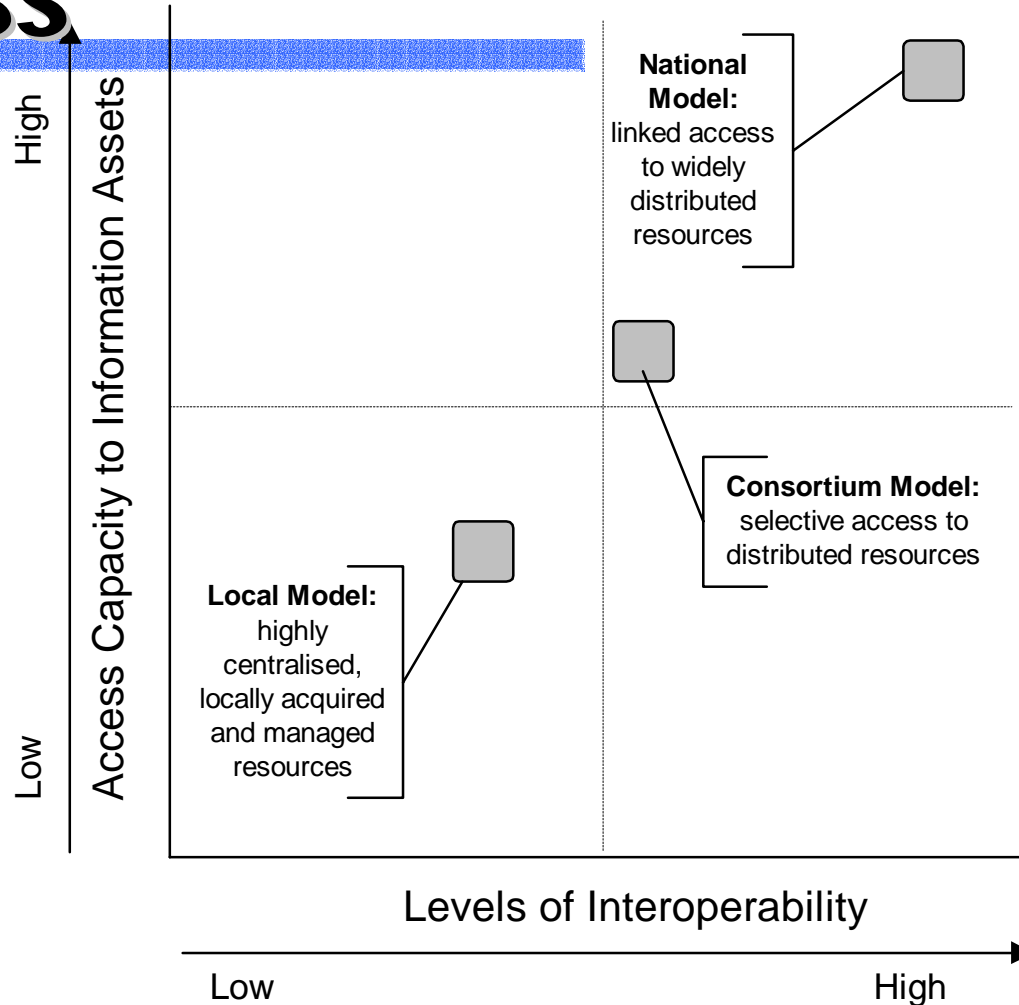
Percentage of Australian holdings of English language monographs published overseas 1975-1995



Access Capacity & Unit Cost



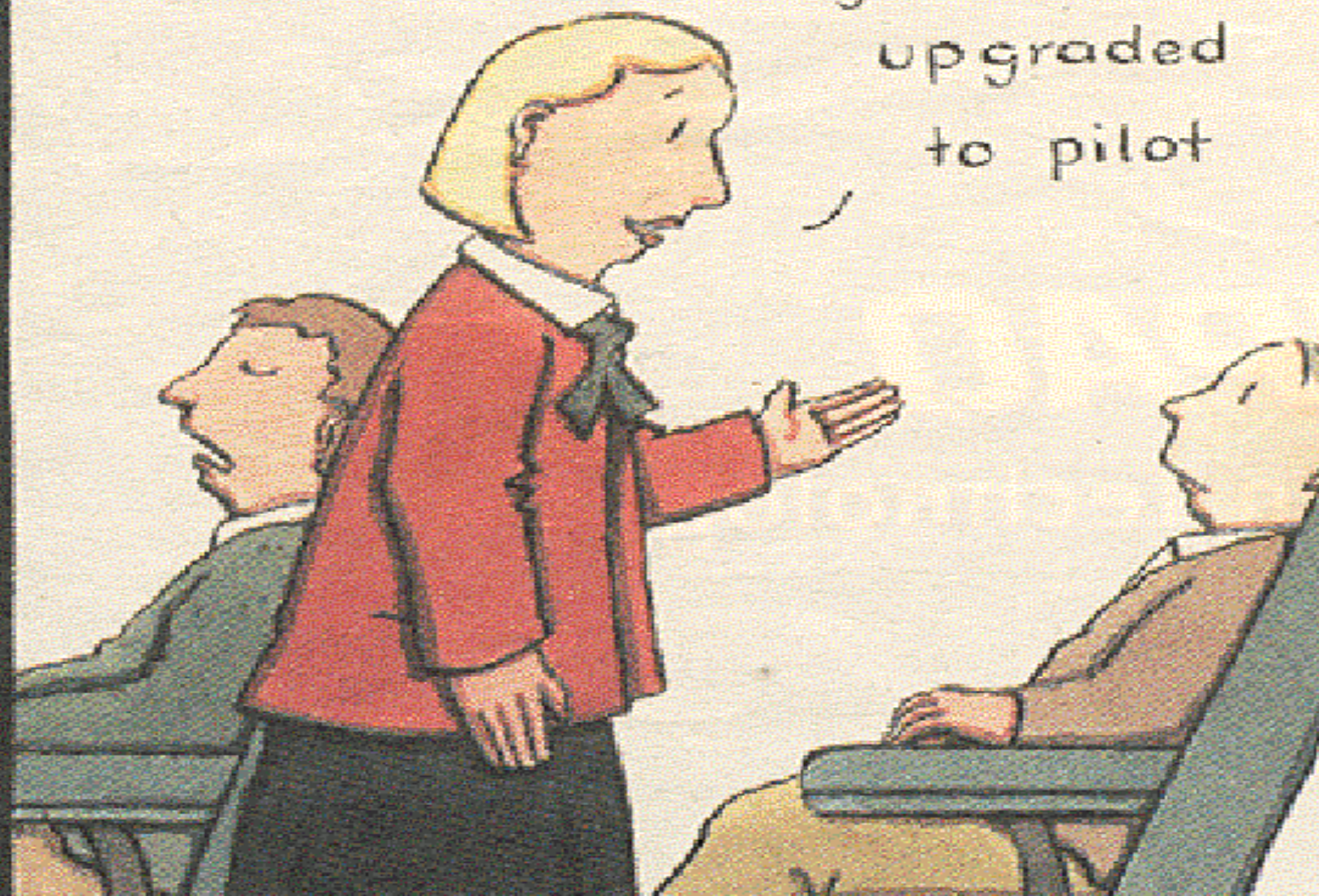
Interoperability & Information Access



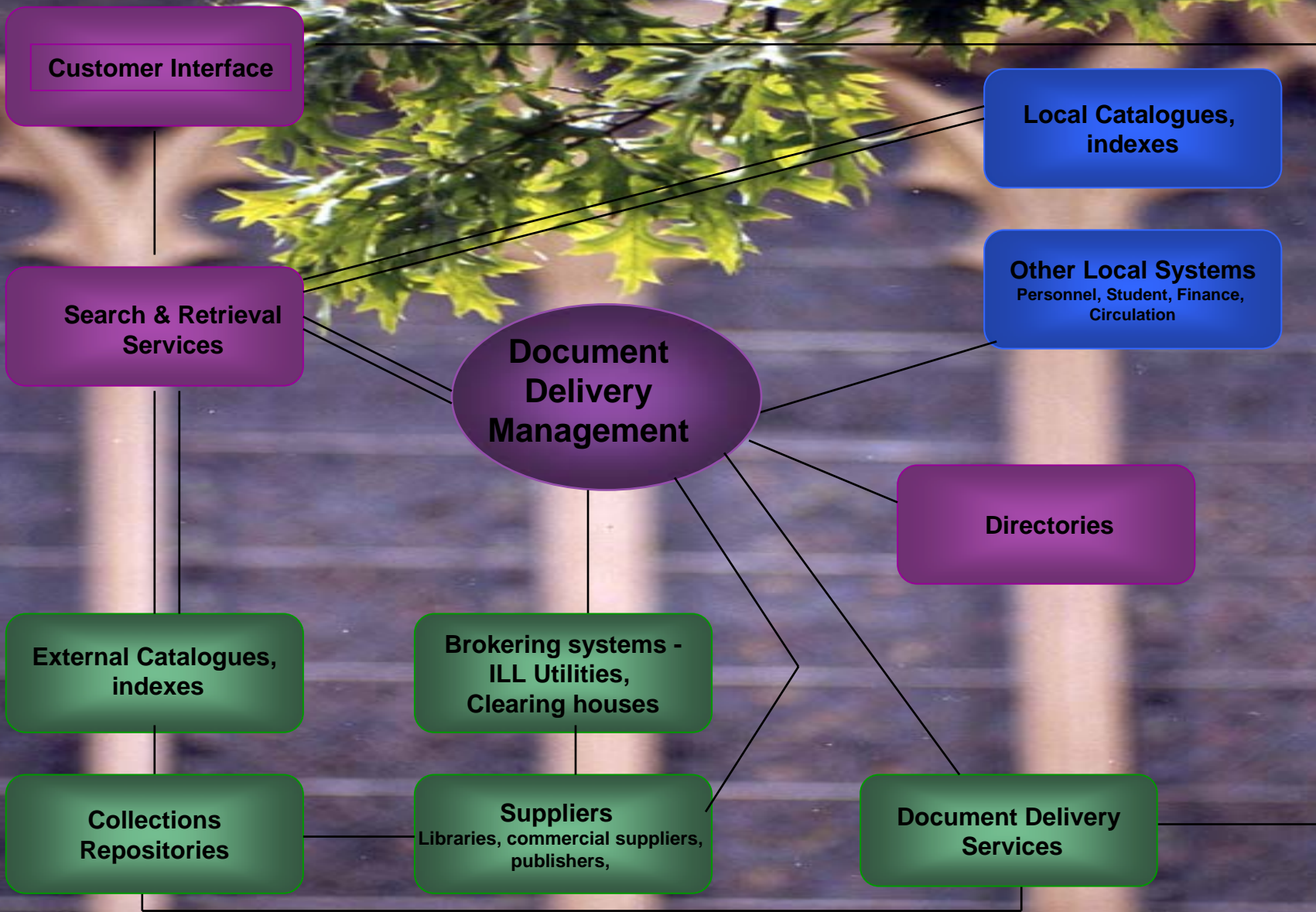
Systemic Strain

- **Balancing proprietary systems and open systems architecture**
- **Balancing institutional library systems development and collaborative/national solutions**
- **Recognising the economics - unit costs to go down;**
- **Budget capacity Currency severely diminished**
- **Demand for on-line delivery for life-long education**

Excuse me sir,
you've been
upgraded
to pilot



1
2
3
4
5
6
7



Service Model - Document Delivery

Consortia approaches

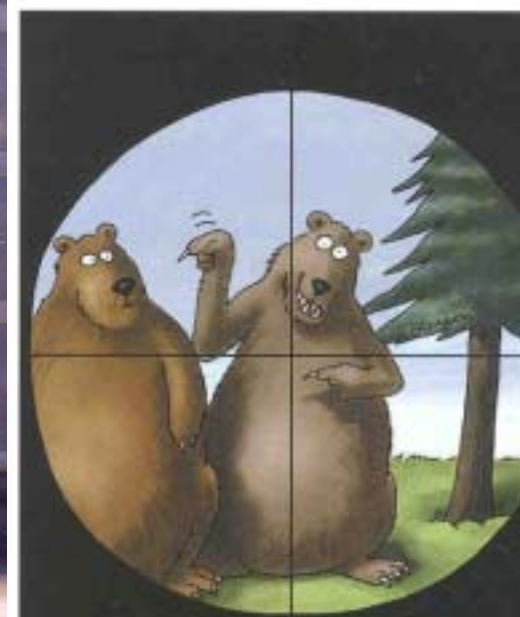
- **CEIRC and many others**
 - **Buying Club**
 - **Unsustainable**
- **Heavy costs of review and administration**
- **Still appropriate for many products**

New Strategies / Model

- **Reliance on interoperability**
- **Recognising continued co-existence of print & digital**
- **Authentication and e-commerce central**
- **Resource sharing solution**

VADL (Victorian Academic Digital Library)

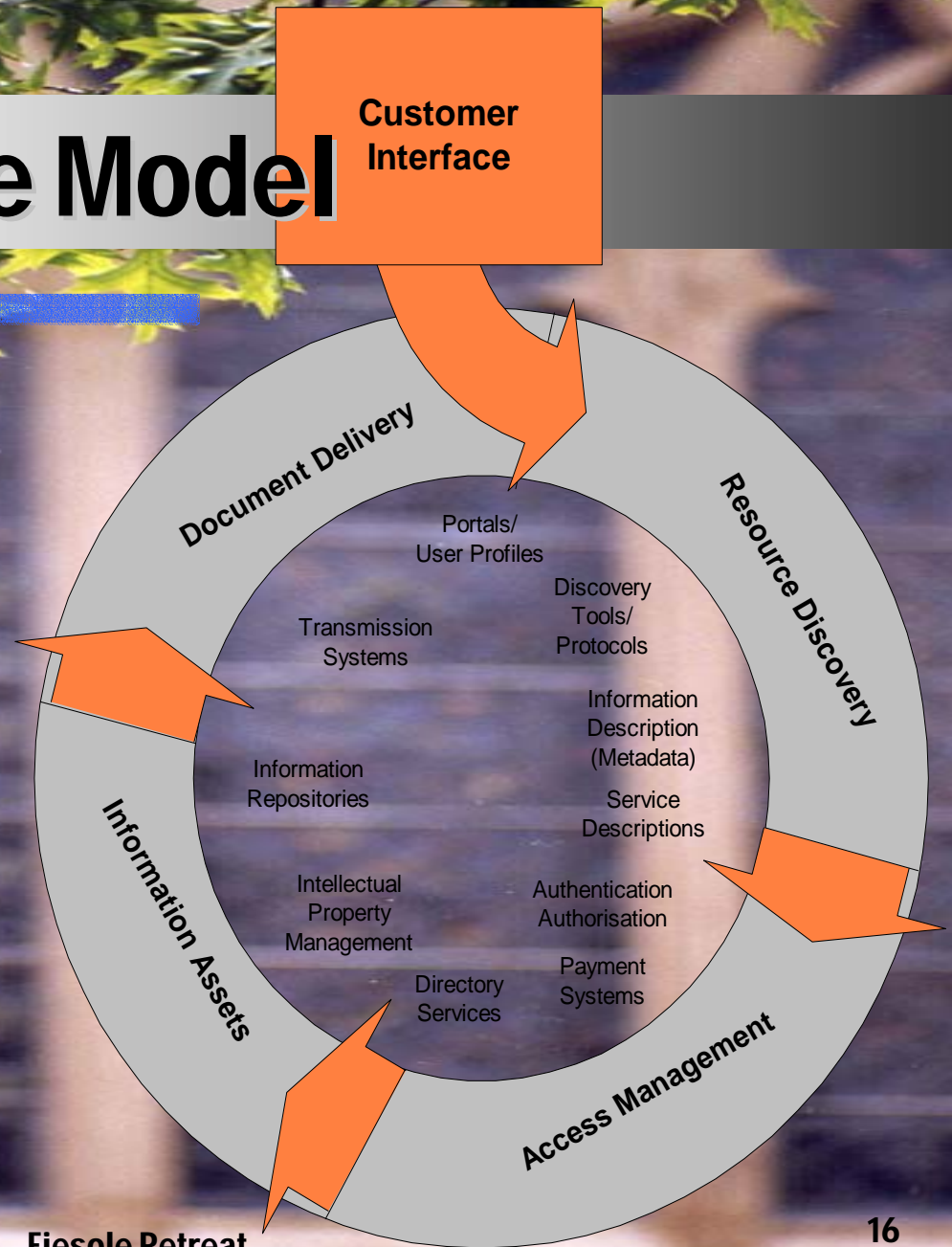
- To create multi-faceted strategy
- SMIT
 - Measurement of overlap and collection design
 - Relative to Discipline output
 - Value of KINETICA
- Collaborative subscriptions



VADL 2

- **Low -use print materials**
 - **CARM and Research Resources Australia**
 - **Existing 2.4 million vols; expanding by 1.7 mill**
- **Digital Archive**
 - **single e-copy / institution**
 - **Audit**
 - **Institutional publishing**

Service Cycle Model



Service Delivery Models

- Location / Providers of service/ content irrelevant to users
- Re-badging for political outcomes
 - Delivery software vehicle
- Combination - with most appropriate partner for each part of the service
 - Service Agreements

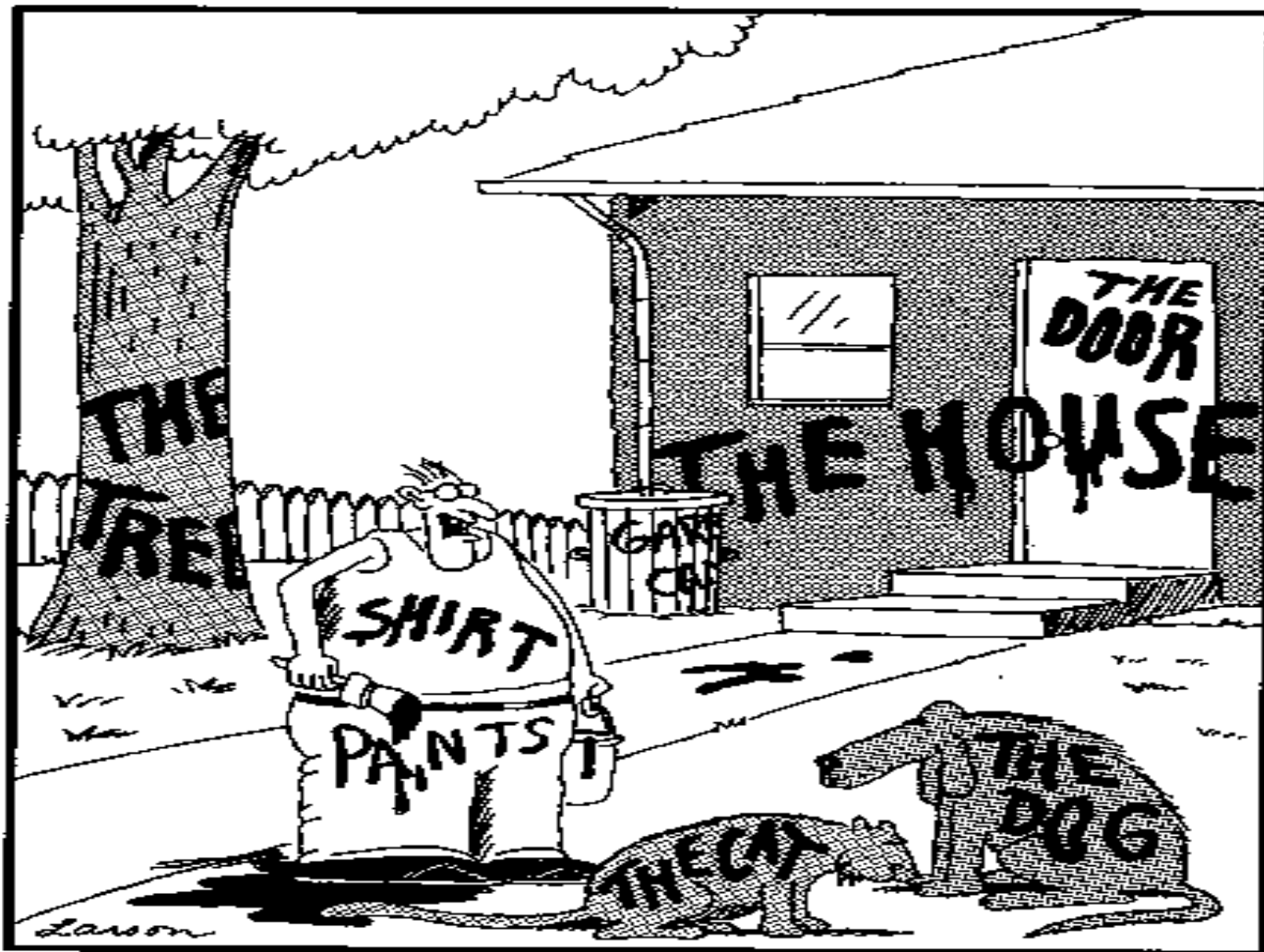
Conclusions..1

- **Innovation and creativity is essential - national strategies should embrace research, demonstration and development projects**
- **Interoperability is the foundation for cost effective infrastructure - open systems and standards are the keys**
- **Interfacing of ILMS to other systems is essential**
 - **Links to commercial service providers a high priority**

Conclusions .. 2

- **Collecting solutions will vary by institution**
- **Matrix components of content & service**
- **Service Agreements underpin model**

We need to change the labels to our world!



"Now! ... That should clear up a few things around here!"

Which service content combination would you choose ?



Thank you

