

# Assisting New Scholars



Lakshman Samaranayake  
DSc, FRCPATH

Dean of Dentistry, University of Hong Kong  
King James IV Professor, Royal College of Surgeons of  
Edinburgh, UK



**Faculty of Dentistry**  
The University of Hong Kong

# JICD \_ Asia Pacific

## Focused dental journal

---



# JICD



- ❧ First issue – August 2010
- ❧ Quarterly publication
- ❧ One manuscript per day
- ❧ Rejection rate 80 %

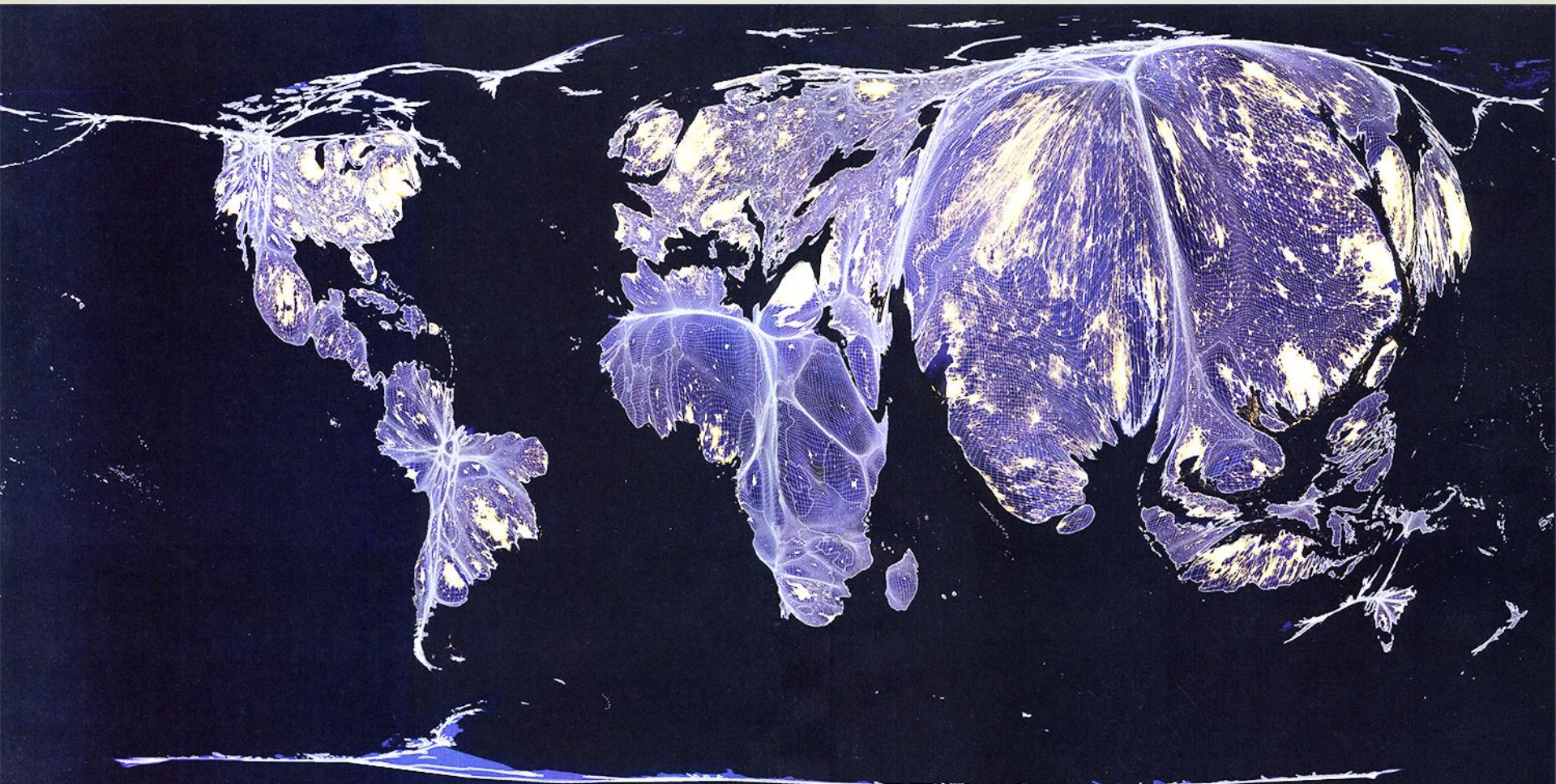


# JICD - Demographics



- India 35 %
- Brazil 22%
- Iran 10 %
- Europe 10%
- China 5%



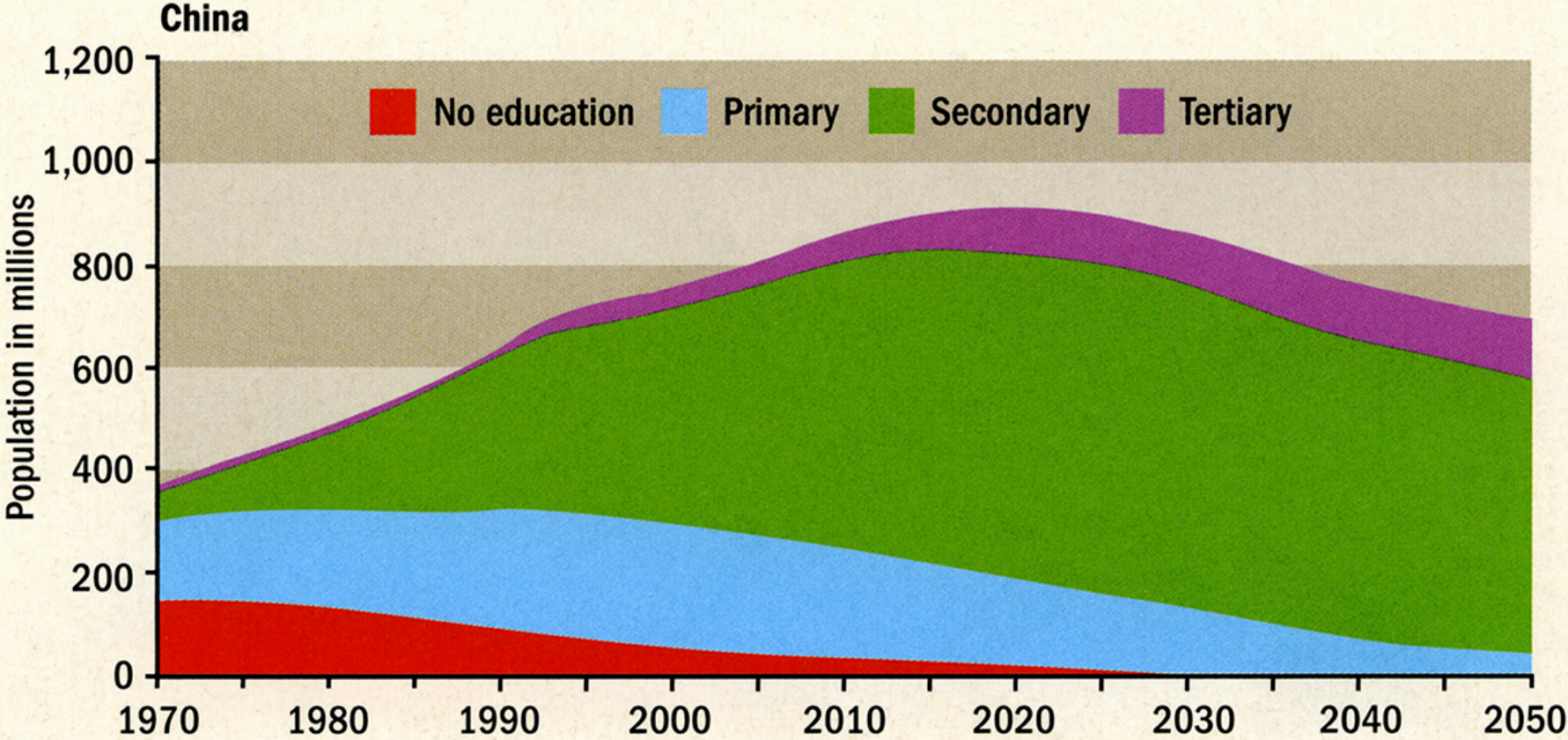


In this detailed satellite image of the Earth at night, the size of countries and continents has been distorted in order to show population density. (The most densely populated areas have been magnified. Unpopulated areas have been shrunk to nothing.) The dark areas show parts of the world in which people find it hard to access electricity, or use less of it. Ben Hennig, senior research fellow in the University of Sheffield's department of geography, created the image using 2012 data.

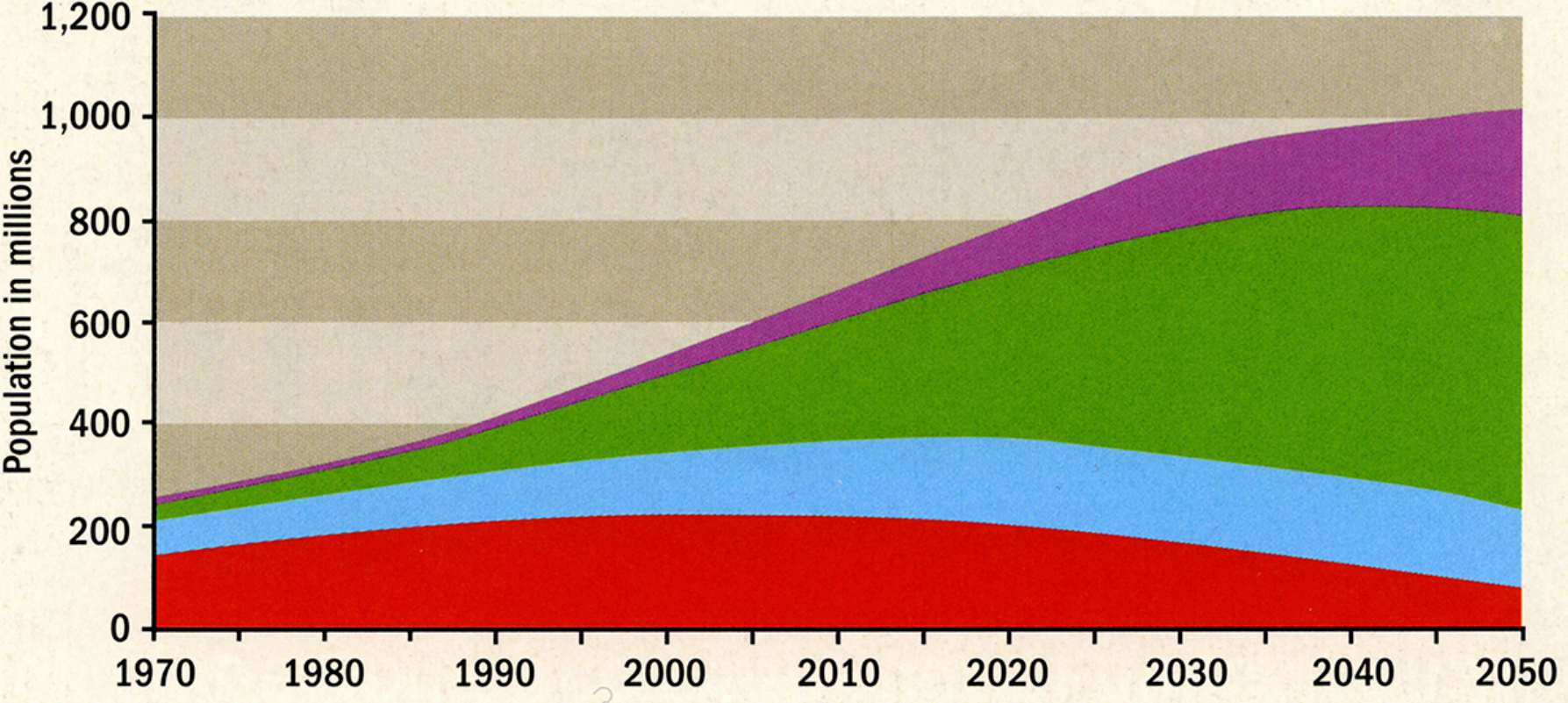
# Census and sensibility

Ahead of the UN's World Population Day next week, **Danny Dorling** considers how the global academy is bending to the winds of demographic change

Numbers (in millions) accessing different levels of education, 1970-2050 (projected)



# India



# Assisting New Scholars



Common problems:

❧ Plagiarism

❧ Self plagiarism

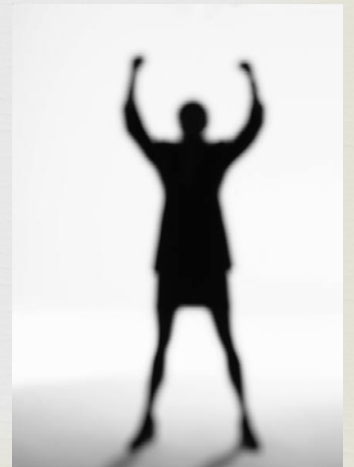
❧ `Reverse Plagiarism`



# Plagiarism



“I am no plagiarist,  
I only moved a  
comma”



# Plagiarism



- ❧ In HKU approximately 50 % of disciplinary cases are related to plagiarism and its consequences
  
- ❧ **Basic ignorance of what plagiarism is**
  - ❧ In one study ` 40% copied word for word without attribution – 90% said that it is plagiarism
  - ❧ If `some changes` were made to the same text (still without attribution then 40% said no/unsure
  
- ❧ **Misconceptions about self plagiarism**

# Data on Plagiarism



- œ One third of UK students think they have plagiarised
- œ 65% in Lithuania
- œ 46 % France
- œ 10% in Germany

# Reverse Plagiarism



∞ Purposeful Avoidance of literature in an attempt to deceive the reviewers

∞ Pagiarism

- Samaranayake L P, *Nature*, 1980

# Assisting Scholars



∞ Education

∞ Reorientation

∞ *Plagiarismadvice.org*

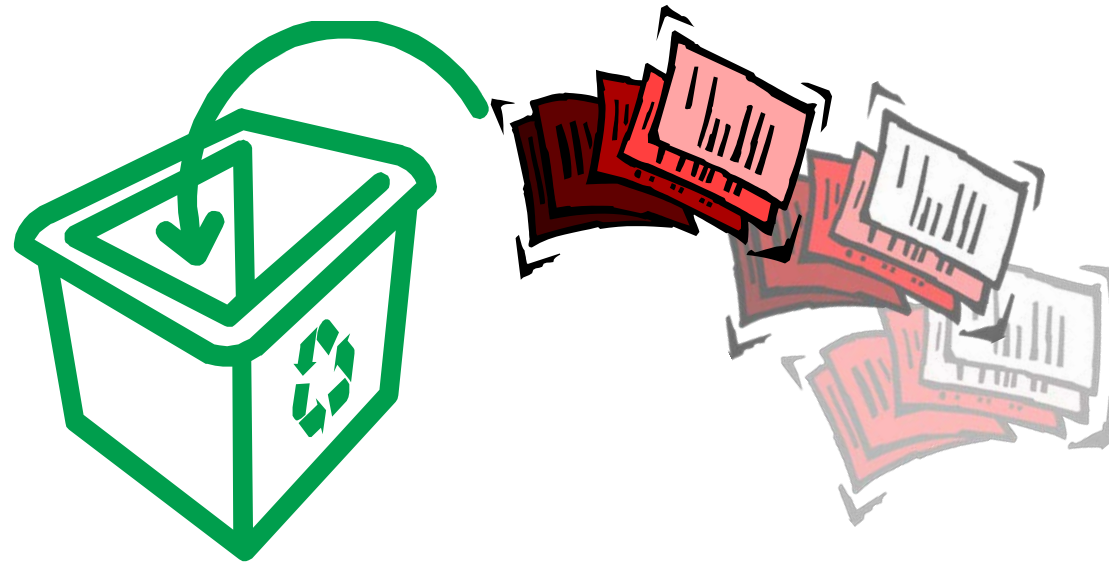
# Helping scholars



To help scholars -

We need to understand  
why papers are rejected

# Top 10 Reasons for Rejection



**Faculty of Dentistry**  
The University of Hong Kong

# Top 10 reasons for rejection



Incomplete, inaccurate,  
outdated or plagiarised  
literature review



Faculty of Dentistry  
The University of Hong Kong



# Top 10 reasons for rejection



Incomplete, inaccurate, outdated or plagiarised literature review:

Need to recognize that a literature review should be contextual, concise complete and free-of plagiarized material



# Top 10 reasons for rejection



## Sample too small or biased



**Faculty of Dentistry**  
The University of Hong Kong

# Top 10 reasons for rejection



Sample too small or biased

- Commonest reason for rejection
- Not understanding the importance of power analysis



Faculty of Dentistry  
The University of Hong Kong

# Top 10 reasons for rejection



**Inaccurate or inconsistent data**



**Faculty of Dentistry**  
The University of Hong Kong

# Top 10 reasons for rejection



## **Inaccurate or inconsistent data**

**Assist by:**

- **training the scholars and teachers**
- **Poor manuscript = sloppy experimental work**



**Faculty of Dentistry**  
The University of Hong Kong

# Top 10 reasons for rejection



Insufficient data presented



**Faculty of Dentistry**  
The University of Hong Kong

# Top 10 reasons for rejection



Insufficient data presented:

Commonest mistake!

Assist by:

- Not to be splitters but lumpers



Faculty of Dentistry  
The University of Hong Kong

# Writing skills!



- ❧ Poor organisation
- ❧ Too long and verbose
- ❧ Failure to communicate clearly
- ❧ Poor grammar, syntax, spelling
- ❧ Excessively self-promotional
- ❧ Poorly written abstract



# Top 10 reasons for rejection



- Mentoring the mentors
- Scientific editing



**Faculty of Dentistry**  
The University of Hong Kong

# Top 10 reasons for rejection



Inappropriate or suboptimal instrumentation

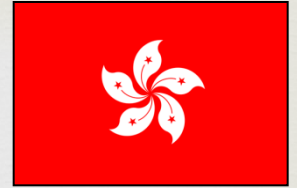
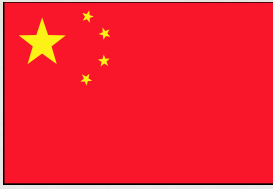
Inappropriate of incomplete statistics



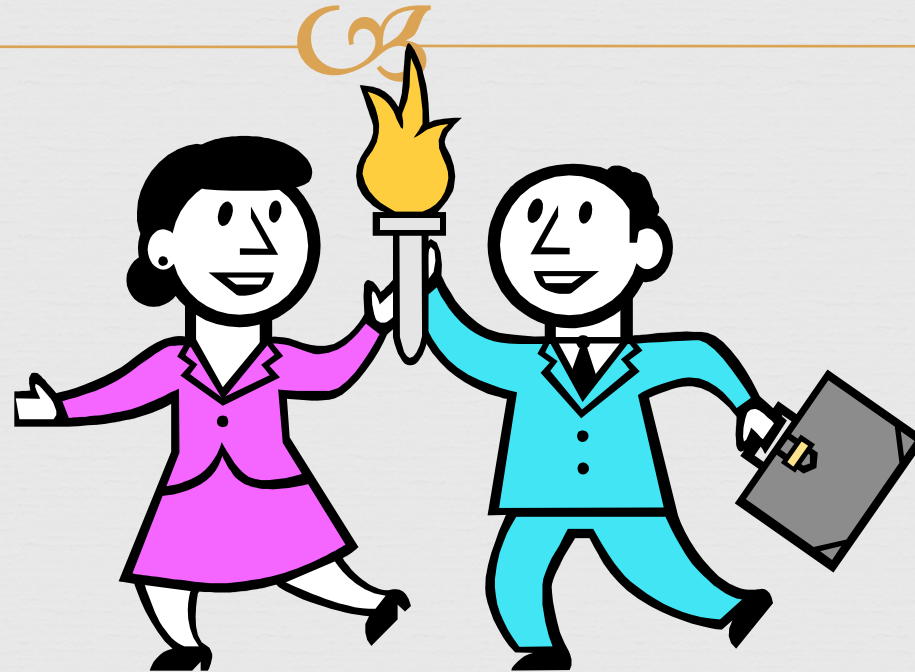
# How should we help?



- ❧ Education
- ❧ Workshops
- ❧ University emphasis on research ethics and consequences
  - ❧ Research integrity office/r
- ❧ Data Privacy issues
- ❧ Authorship issues
  - ❧ Who owns the data?



# Thank you!



[www.facdenthk.org](http://www.facdenthk.org)



**Faculty of Dentistry**  
The University of Hong Kong